

EX78900 シリーズ

Lite L3 広範囲動作温度対応産業用/管理型 16ポート (8 x PoE) ギガビット イーサネット スイッチ



概要

[When should you use an Industrial Layer 3 switch?](#)

EtherWAN の EX78900 シリーズは広温度範囲対応 DIN レール型最大16 ギガビット ポート運用が可能な、イーサネット口スイッチです。IEEE 802.3at/af 準拠、60W の PoE を搭載しており、過酷な環境でも中断なしの通信を提供できる堅牢な管理機能を備えています。

EX78900 シリーズは 12ポート 10/100/1000 BASE-TX(8 x PoE ポート)と ギガビット SFP ポート 4個を搭載し、Ultra PoE ポートは1ポートあたり 60W、全ポート合計最大240W までの電力供給が可能で、屋外 PTZ ドーム カメラ、無線アクセス ポイントや路線脇の通信機器など、帯域幅と消費電力が異なる PoE 給電機器を問題なく接続します。ポートセキュリティやIGMP、VLAN、GARP プロトコル、リンク集合及びACLなどの管理機能はブラウザ経由で設定可能です。Telnet、SSH、SNMP、RMON、TFTP、RS-232 コンソール接続などにも対応します。

動作温度は-40~75°Cと広範囲に対応し、high ESD, ショックと振動などの過酷な環境でもご使用いただけます。

EtherWAN — "When Connectivity is Crucial."

特長

+ High Bandwidth and Versatility

8 or 12 10/100/1000BASE-T(X) ports for high bandwidth connections
Up to 4 gigabit fiber connections
Full capacity switching running at full duplex

+ Hardened-Grade for Non-Ventilated & Harsh Environments

Wide operating temperature range -40 to 75°C (-40 to 167°F)
Fanless operation
High impact, thermal shock, and electrical noise resistance

+ Lite Layer 3 Functionality

Static routing, RIP v1/v2, and OSPF
Redundancy with VRRP
Reduces amount of broadcast traffic

+ PoE Features

Up to 60W/port with 240W total power budget
Long distance PoE up to 250m (820ft)
PoE watchdog monitors status of connected PoE devices

+ Management/Security Features

Port control
802.1x port-based network access control and remote authentication through RADIUS
Configure and monitor with eVue™ and eLite™

+ Support

Complimentary Technical Support
Free Firmware Upgrades
Limited Lifetime Warranty

機能

+ Interface

CLI, Telnet, Web GUI
SNMP v1/v2c/v3

+ Management

Firmware and configuration upgrade and backup via TFTP
DHCP Server/Client
RMON (Remote Monitoring): group 1, 2, 3, 9
Port Mirroring: TX/RX and both
NTP (Network Time Protocol) synchronization
IEEE 802.1ab LLDP (Link Layer Discovery Protocol)
IPv4/IPv6

+ Security

MAC Address Filtering
Enable/Disable port
Storm control (Broadcast and multicast types)
IEEE 802.1x LAN Access Control
Remote authentication through RADIUS and TACACS+
SSH for CLI and Telnet security
SSL for web security
System log (Remote/Local)
ACL

+ Quality of Service (QoS)

Priority Queues: 4 queues per port
Traffic classification based on IEEE 802.1p CoS, DSCP, WRR and strict mode
Rate Limiting (Ingress/Egress)

+ Layer 2 Features

Auto-negotiation for port speed and duplex mode
Flow Control
IEEE 802.3x Full duplex mode
Back-Pressure half duplex mode

Redundant Protocols

IEEE 802.1D STP
IEEE 802.1w RSTP
IEEE 802.1s MSTP
EtherWAN's Alpha-Ring network fault recovery (<15ms)

VLANs

IEEE 802.1Q Tag VLANs
GVRP
GMRP

Link Aggregation

Static Trunk (4 groups, support MAC base)
IEEE 802.3ad LACP

IGMP Snooping v1/v2/v3

+ Layer 3 Features

IP Packet Routing

Maximum number of routes in hardware: 64 entries
Static Routing
RIP v1/v2
OSPF v2

Routing Redundancy

VRRP

仕様

+ Interface

Ethernet

8 or 12 (8 PoE) x 10/100/1000BASE-T(X)
4 x 1000BASE SX/LX/SFP

Console

1 x DB9 RS-232

Alarm Contact

1 x Relay output, current capacity 0.5A/48VDC

LED Indicators

Per Unit: Power 1, Power 2

Per Port: Link/Activity (Green)

Per PoE Port: PoE Status (Orange)

+ Technology

Standards

IEEE 802.3 10BASE-T

IEEE 802.3u 100BASE-TX/100BASE-FX

IEEE 802.3ab 1000BASE-T

IEEE 802.3z 1000BASE-SX/1000BASE-LX

IEEE 802.3x Full duplex and flow control

IEEE 802.1p QoS

IEEE 802.1Q Tag VLANs

IEEE 802.1w RSTP

IEEE 802.1x PNAC

IEEE 802.3af/at Power over Ethernet

Forward/Filtering Rate

14,880pps for 10Mbps

148,810pps for 100Mbps

1,488,100pps for 1000Mbps

Packet Buffer Memory

12M bits

Processing Type

Store-and-Forward

Auto-negotiation

Half-duplex back-pressure and IEEE 802.3x Full-duplex flow control

Auto MDI/MDIX

Jumbo Frame

9216 bytes

Address Table Size

16K MAC Addresses

+ Power

Input

52-57VDC Redundant (Terminal block)

Power Consumption
20W Max (without PoE)

PoE Technology
Alternative A & B
Pins 1/2(+), 3/6(-), Pins 7/8(-), 4/5(+)

PoE Power Output
PoE can be configured as:
1. 6-port 15.4W PoE and 2-port 60W PoE
2. 8-port 30W PoE
3. 4-port 10/100/1000-TX and 4-port 60W PoE
4. Other PoE power level configuration can be done through firmware
Power Budget: 240W

Protection
Reverse Polarity Protection

+ Physical

Casing Material
Aluminum

IP Rating
IP30

Dimensions
72 x 140 x 170mm (W x D x H)
2.8" x 5.5" x 6.7"

Weight
1.5kg (3.3lbs)

Installation Type
DIN-rail mounting

+ Environmental

Operating Temp.
-40 to 75°C (-40 to 167°F)
Tested @ -40 to 85°C (-40 to 185°F)

Storage Temp.
-45 to 85°C (-49 to 185°F)

Relative Humidity
5% to 95% (non-condensing)

+ Regulatory

ISO
Manufactured in ISO-9001 facility

EMI
FCC Part 15B Class A
VCCI Class A
EN 61000-6-4
EN 61000-3-2
EN 61000-3-3

EMS
EN 61000-6-2
EN 61000-4-2 (ESD)
EN 61000-4-3 (Radiated RFI)
EN 61000-4-4 (Burst)
EN 61000-4-5 (Surge)
EN 61000-4-6 (Induced RFI)
EN 61000-4-8 (Magnetic Field)

Vibration
IEC 60068-2-6 Fc

Shock
IEC 60068-2-27 Ea

Free Fall
FED STD 101C Method 5007.1

+ Warranty

Length

Limited Lifetime

Details

www.etherwan.com/support/warranty-policy

+ What's Included

Device

Ethernet Switch

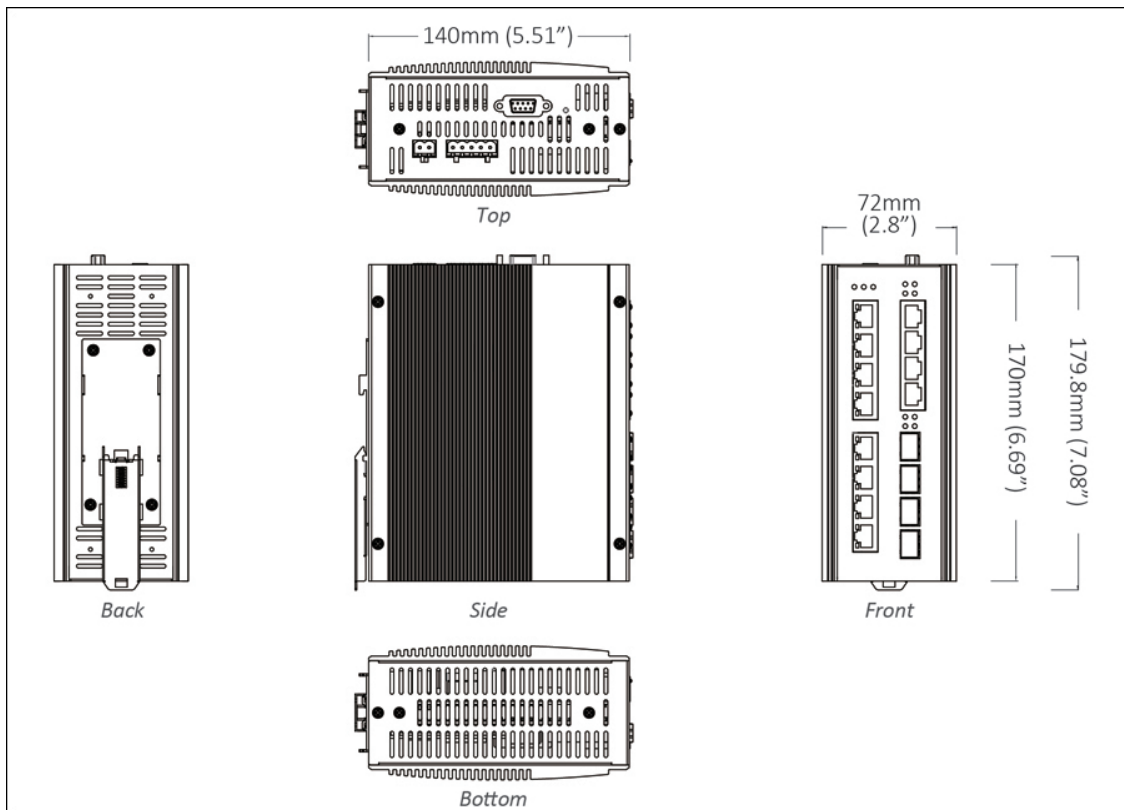
Cables

1 Console Cable

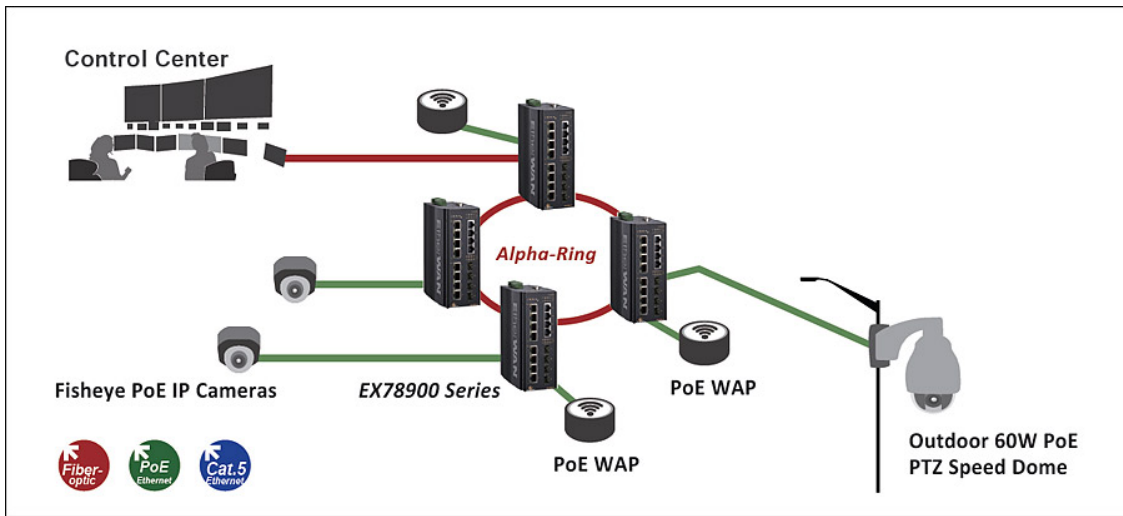
Documentation

Quick Install Guide

寸法図

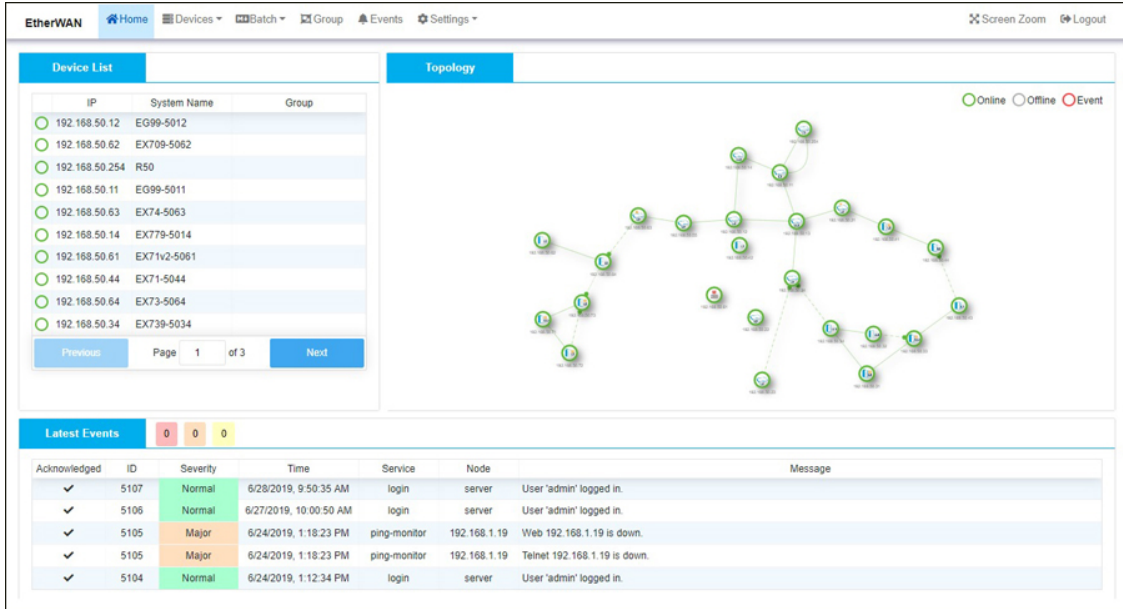


応用例



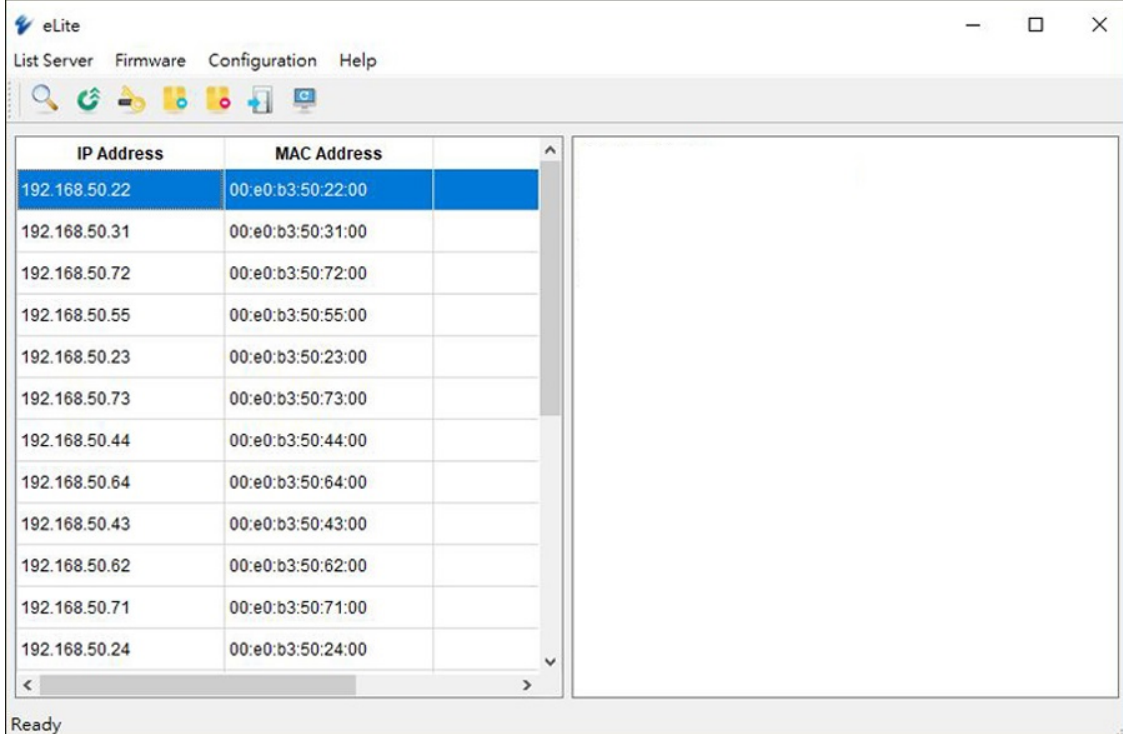
ソフトウェア

Network Management [eVue™ Network Configuration and Monitoring Tool](#)
 Network Discovery [eLite™ Network Discovery and IP Configuration Tool](#)



The screenshot shows the EtherWAN web interface. On the left, there is a 'Device List' table with columns for IP, System Name, and Group. The table contains 12 entries, all with green status indicators. On the right, there is a 'Topology' diagram showing a network of interconnected nodes, some green (Online) and some grey (Offline). Below these, there is a 'Latest Events' section with a table of events.

Acknowledged	ID	Severity	Time	Service	Node	Message
✓	5107	Normal	6/28/2019, 9:50:35 AM	login	server	User 'admin' logged in.
✓	5106	Normal	6/27/2019, 10:00:50 AM	login	server	User 'admin' logged in.
✓	5105	Major	6/24/2019, 1:18:23 PM	ping-monitor	192.168.1.19	Web 192.168.1.19 is down.
✓	5105	Major	6/24/2019, 1:18:23 PM	ping-monitor	192.168.1.19	Telnet 192.168.1.19 is down.
✓	5104	Normal	6/24/2019, 1:12:34 PM	login	server	User 'admin' logged in.



The screenshot shows the eLite application window. It has a menu bar with 'List Server', 'Firmware', 'Configuration', and 'Help'. Below the menu is a toolbar with various icons. The main area contains a table with two columns: 'IP Address' and 'MAC Address'. The table lists 14 entries, with the first row highlighted in blue.

IP Address	MAC Address
192.168.50.22	00:e0:b3:50:22:00
192.168.50.31	00:e0:b3:50:31:00
192.168.50.72	00:e0:b3:50:72:00
192.168.50.55	00:e0:b3:50:55:00
192.168.50.23	00:e0:b3:50:23:00
192.168.50.73	00:e0:b3:50:73:00
192.168.50.44	00:e0:b3:50:44:00
192.168.50.64	00:e0:b3:50:64:00
192.168.50.43	00:e0:b3:50:43:00
192.168.50.62	00:e0:b3:50:62:00
192.168.50.71	00:e0:b3:50:71:00
192.168.50.24	00:e0:b3:50:24:00

Ready

製品型番

+ Model

EX78931-0VB	12-Port 10/100/1000BASE-TX with 8-port PoE + 4-port Gigabit SFP
EX78921-0VB	8-Port 10/100/1000BASE-TX PoE + 4-Port Gigabit SFP
EX78921-0XB	8-Port 10/100/1000BASE-TX PoE + 4-Port Gigabit Fiber

* DIN-Rail mounting kit included.

+ Gigabit Port Options (X)

3	1000BASE-SX (SC) - 550m
4	1000BASE-SX (SC) - 2Km
5	1000BASE-SX (ST) - 550m
A	1000BASE-LX (SC) - 10Km
B	1000BASE-LX (SC) - 20Km
R	1000BASE-BX (SC) WDM-TX: 1310nm/RX: 1550nm-20Km
S	1000BASE-BX (SC) WDM-TX: 1550nm/RX: 1310nm-20Km

* More Gigabit options also available upon request.

+ Accessories

Hardened Gigabit SFP Modules	www.etherwan.com/products/sfp-fiber-transceiver
DIN-Rail Power Supplies	www.etherwan.com/products/din-rail-power-supply (*)
*Recommended Power Supply	NDR-480-48 480W 48VDC DIN-Rail Power Supply
EB-232	Configuration Backup and Restoration Tool

