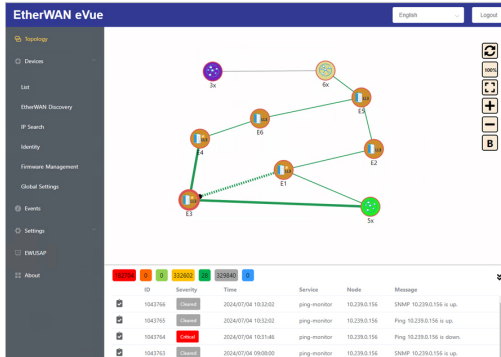


eVue

Network Management Software



Overview

eVue is a next-generation network management system designed for EtherWAN devices, supporting up to 512 devices. It boasts high compatibility with EtherWAN network devices, significantly reducing costs compared to gradual device setup and monitoring. eVue simplifies network management steps, enhancing work efficiency and effectiveness.

Key features of eVue include:

1. Automatic Discovery and Monitoring of EtherWAN Devices

eVue automatically searches and adds devices on the network for monitoring. It detects devices across LANs or different network segments as defined by the user. eVue monitors device status and events such as power outages, ping failures, broadcast storms, and abnormal temperature or humidity levels, ensuring comprehensive network oversight.

2. Clear and Visualized Topology with Real-time Monitoring

Visualized topology views provide clear network connection statuses, facilitating easy management and real-time monitoring of port utilization and device interconnections.

3. Real-Time Remote Email Notifications

Users receive customizable email notifications for network events, enabling remote device management and real-time situational awareness.

4. Scheduled Firmware Upgrades Simplified

eVue supports seamless firmware upgrades for EtherWAN devices, eliminating complexity in device management and network configuration. Scheduled firmware updates ensure devices are always equipped with the latest enhancements.

eVue, deeply integrated with EtherWAN devices, serves as an ideal network management solution, saving time and costs while maximizing operational benefits.

EtherWAN — "When Connectivity is Crucial."

Specifications

+ System Requirements

CPU	Intel i5 2.5GHz and above
RAM	4GB and above
Hard Disk	1TB, 7200 RPM, SATA-3Gb/s or higher
Operating System	Windows 10 (64-Bit)
Browser	Microsoft Edge, Chrome v64 or later, Firefox v58 or later, Safari 11.11.1 or later

+ Supported EtherWAN Devices (Model No.)

EG97000 Series
EG97023 Series
EG99000 Series
EX89000 Series
EX87000 Series
EX83304 Series
EX83000 Series
EX78900X Series
EX78900E Series
EX78900 Series
EX78162 Series
EX78000 Series
EX77964 Series
EX77900 Series
EX77000 Series
EX76000 Series
EX75900 Series
EX75000 Series
EX73900E Series
EX73900 Series
EX73000 Series
EX71000 Series
EX70900 Series
EX63000 Series
EX61000A Series
EX29000 Series
EX27000 Series
IG5 Series (Not sold in U.S. and Canada)
EX25611

+ Supported Limited Function (Model No.)

C4G

(Available in North America only)

eWAV

(Available in North America only)

EW50 Series

(Not sold in U.S. and Canada)

EW200 Series

(Not sold in U.S. and Canada)

SmartE (Not sold in U.S. and Canada)

ED3575

EX26484 (Not sold in U.S. and Canada)

EX26262F (Not sold in U.S. and Canada)

EasyPoE Box

(Available in North America only)



© EtherWAN Systems, Inc. All rights reserved. 20240723

EtherWAN is constantly developing and improving products. Specifications are subject to change without notice and without incurring any obligation.