

EX16916 系列

非網管16埠Gigabit乙太網路交換器



產品介紹

本產品自2020年10月10日起停產。請點選 [此處](#) 尋找替代產品。

The EX16916 Series is equipped with sixteen Gigabit Ethernet ports and feature rich with 9K Jumbo Frame support, full wire speed Gigabit throughput, QoS support and eco-friendly IEEE802.3az EEE (Energy Efficient Ethernet) compliant, making the EX16916 Series a powerful yet energy efficient network switch.

EtherWAN — "When Connectivity is Crucial."

產品亮點

Jumbo Frame Support

- » Up to 9K bytes

High Reliability

- » Fanless design
- » No moving parts

Eco-friendly support

- » IEEE802.3az EEE (Energy Efficient Ethernet) allow less consumption during periods of low data activity

QoS

- » Traffic classification based on IEEE802.1p CoS

產品規格

Technology

Standards

- IEEE802.3 10BASE-T
- IEEE802.3u 100BASE-TX/100BASE-FX
- IEEE802.3ab 1000BASE-T
- IEEE802.3x Full duplex flow control
- IEEE802.3az Energy Efficient Ethernet
- IEEE802.1p Quality of Service (QoS)

Forward and Filtering Rate

- 14,880pps for 10Mbps
- 148,810pps for 100Mbps
- 1,488,100pps for 1000Mbps

Packet Buffer Memory

- 256KB

Processing Type

- Store-and-Forward
- Auto Negotiation
- Half-duplex back-pressure and IEEE802.3x full-duplex flow control
- Auto MDI/MDIX

Jumbo Frame

- 9K bytes

Address Table Size

- 8K MAC addresses

Power

Input Voltage

- 100 to 240VAC

Power Consumption

- 8.1W Max. 0.85A.
-

Mechanical

Casing

- Metal case
- IP30

Dimensions

- 42mm (H) x 216mm (W) x 133mm (D)
(1.68" (H) x 8.64" (W) x 5.32" (D))

Weight

- 0.9Kg (1.98lbs.)

Installation

- Rack-mount (rack mounting kit included)
-

Interface

Ethernet Port

- 10/100/1000BASE-T: 16 ports

LED Indicators

- Per Unit: Power (Green)
 - Per Port: Link & Activity (Green)
-

Environment

Operating Temperature

- 0°C to 50°C (32°F to 122°F)

Storage Temperature

- -40°C to 70°C (-40°F to 158°F)

Ambient Relative Humidity

- 10% to 95% (non-condensing)

Regulatory Approvals

ISO

- Manufactured in an ISO9001 facility

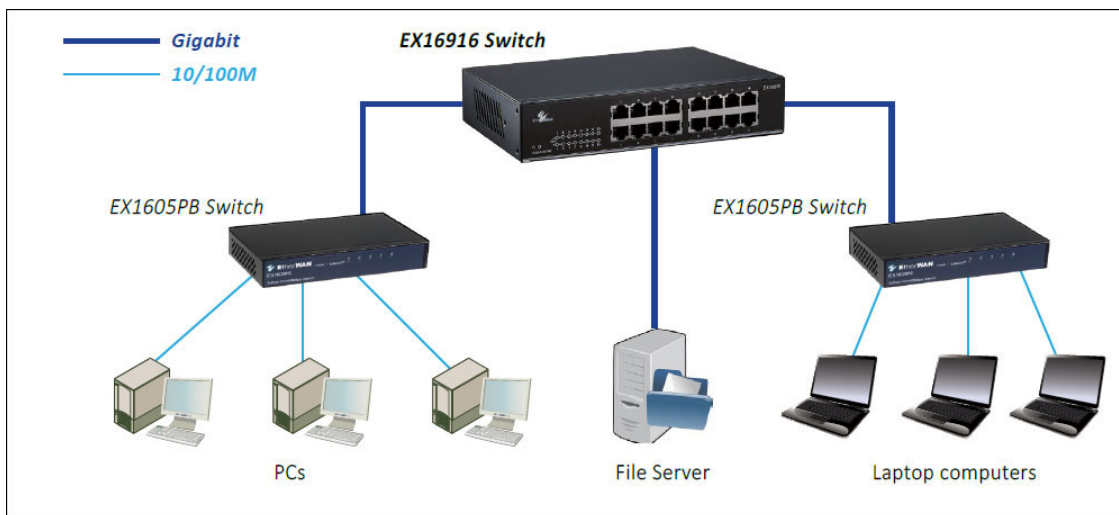
EMI

FCC Class B

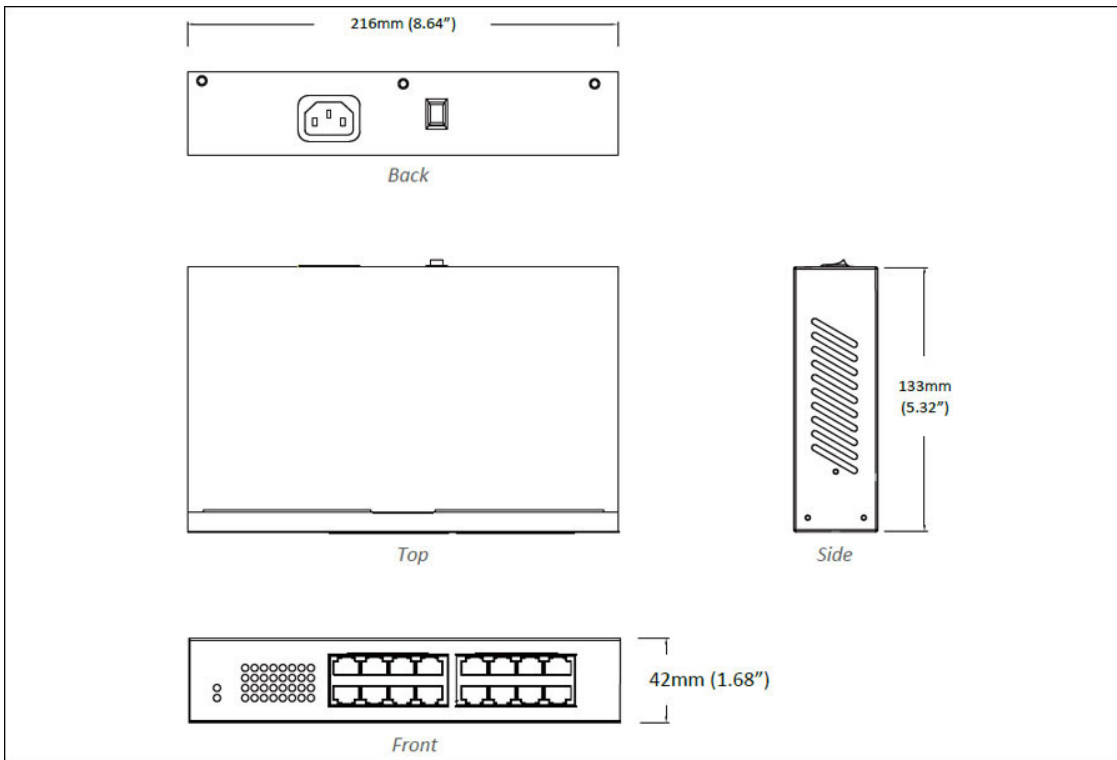
CE Class B

LVD EN60950-1

產品應用圖



產品尺寸圖



訂購型號

Model

| | |
|---------|---|
| EX16916 | Unmanaged 16 Port Gigabit Ethernet Switch |
|---------|---|

