

## EX41-136044

36W 12VDC 強固級變壓器 (Latch)



### 產品特色

Complies with NEMA TS1 & TS2 environmental requirements for traffic control equipment

## 產品規格

### 電源

#### Input Rating

- 90-264VAC (47-63Hz)

#### Output Rating

- 36W, 12VDC, 0-3A

### 機構

#### 機殼

- Aluminum case

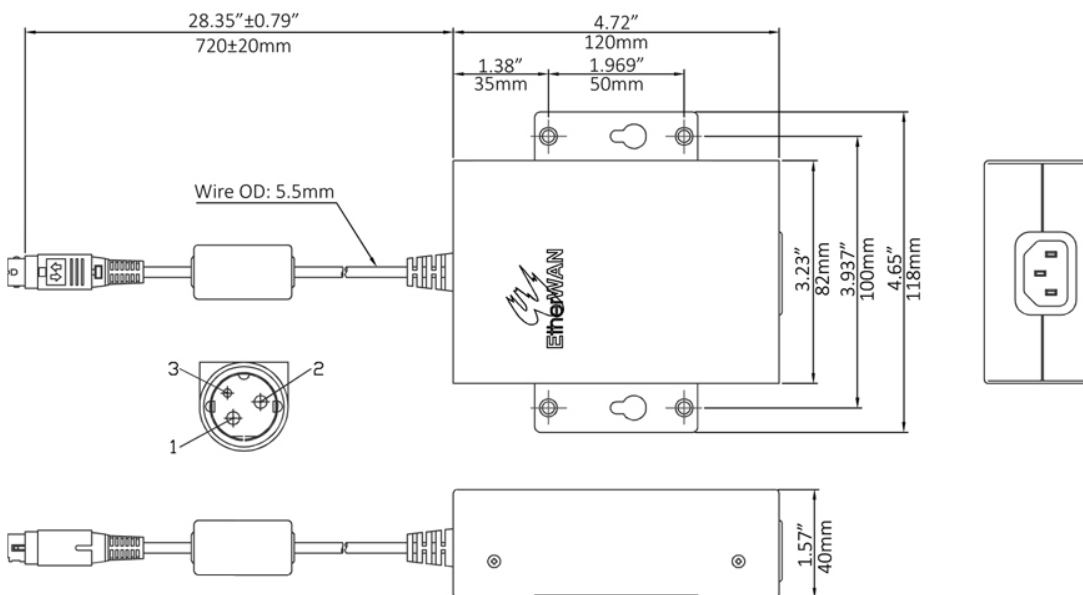
#### 工作溫度

- -40 to 75°C (-40 to 167°F)

#### Output Connector

- DC jack with latch

## 產品尺寸圖



## 訂購型號

### 型號

EX41-136044-X	Power Supply 36W 12VDC with Latch
---------------	-----------------------------------

---

### Input Plug Options (X)

2	EU
3	UK
4	AU
5	JP
6	SA

---

