

EX78000 系列

強固級網管型 4-10埠10/100BASE (8 x PoE) +2埠 Gigabit 乙太網路交換器



產品亮點

+ Hardened-Grade for Non-Ventilated & Harsh Environments

Wide operating temperature range -40 to 75°C (-40 to 167°F)
Fanless operation
High impact, thermal shock, and electrical noise resistance

+ PoE Features

Up to 60W/port with 240W total power budget
Long distance PoE up to 250m (820ft)
PoE watchdog monitors status of connected PoE devices

+ Management/Security Features

Port control
802.1x port-based network access control and remote authentication through RADIUS
Configure and monitor with eVue™ and eLite™

+ Support

Complimentary Technical Support
Free Firmware Upgrades
Limited Lifetime Warranty

產品介紹

EX78000系列為強固等級網管型乙太網路交換器，產品配備8個10/100base PoE連接埠加2埠100BASE及2個Gigabit 光纖埠，可彈性搭配多種介面組合: SX/LX/BX/WDM及SFP插槽。Ultra PoE 網路埠，每埠最高可支援60W，總供電瓦數為240W，可廣泛應用於許多終端設備，例如PTZ 球型攝影機、無線基地台及軌旁通訊設備等。

支援標準備援通訊協定STP/RSTP/MSTP，並支援益網獨家技術Alpha-Ring環狀網路備援機制，可在網路發生斷線時迅速啟動備援機制，可在小於15毫秒內快速恢復連線通訊。完整的管理功能，包含IPV4/IPV6 協定, port security, IGMP snooping, port-based VLANs, GARP 協定, 和 link aggregation；使用者可透過網頁瀏覽、Telnet、SSH、SNMP、TFTP和RS-232 console 管理介面，可使嚴苛複雜的專案規劃事半功倍。

EX78000系列專為嚴峻戶外環境設計打造，工業等級設計，可承受強力的落摔衝擊、防震動及抗電磁波干擾，更可在 -40 到 75°C 寬溫環境下穩定運作，於嚴峻的專案規劃佈局中扮演致勝的關鍵角色。

EtherWAN — "When Connectivity is Crucial."

產品特色

+ Interface

CLI, Telnet, Web Browser
SNMP v1/v2c/v3

+ Management

Firmware and configuration upgrade and backup via TFTP
Supports DHCP Server/Client
RMON (Remote Monitoring): group 1, 2, 3, 9
Port Mirroring: TX/RX and both
NTP (Network Time Protocol) synchronization
IEEE 802.1ab LLDP (Link Layer Discovery Protocol)
IPv4/IPv6

+ Security

MAC Address Filtering
Enable/Disable port
Storm control (Broadcast and multicast types)
IEEE 802.1x LAN Access control
Remote authentication through RADIUS and TACACS+
Multi-user login and privileged access management
SSH for CLI and Telnet security
SSL for web security
System log (Remote/Local)
ACL

+ Quality of Service (QoS)

Priority Queues: 4 queues per port
Traffic classification based on IEEE 802.1p CoS, DSCP, WRR and strict mode
Rate Limiting (Ingress/Egress)

+ Layer 2 Features

Auto-negotiation for port speed and duplex mode
Flow Control
IEEE 802.3x Full duplex mode
Back-Pressure half duplex mode

Redundant Protocols

IEEE 802.1D STP
IEEE 802.1w RSTP
IEEE 802.1s MSTP
EtherWAN's Alpha-Ring network fault recovery (<15ms)

VLANs

IEEE 802.1Q Tag VLANs (128 groups, 4096 VID)
GVRP
GMRP

Link Aggregation

Static Trunk (2 groups, support MAC base)
IEEE 802.3ad LACP

IGMP Snooping v1/v2/v3

產品規格

+ Interface

Ethernet

4 or 8 x 10/100BASE-T(X) (PoE)

0, 2 or 4 x 100BASE FX

2 x 100/1000BASE SFP Slot

2 x Gigabit

Console

1 x DB9 RS-232

Alarm Contact

1 x Relay output, current capacity 0.5A/48VDC

LED Indicators

Per Unit: Power 1, Power 2, Alarm

Per Port: Link/Activity (Green)

Per PoE Port: (Orange)

+ Technology

Standards

IEEE 802.3 10BASE-T

IEEE 802.3u 100BASE-TX/100BASE-FX

IEEE 802.3ab 1000BASE-T

IEEE 802.3z 1000BASE-SX/1000BASE-LX

IEEE 802.3x Full duplex and flow control

IEEE 802.1p QoS

IEEE 802.1Q Tag VLANs

IEEE 802.1w RSTP

IEEE 802.1x PNAC

IEEE 802.3af/at Power over Ethernet

Forward/Filtering Rate

14,880pps for 10Mbps

148,810pps for 100Mbps

1,488,100pps for 1000Mbps

Packet Buffer Memory

12M bits

Processing Type

Store-and-Forward

Auto-negotiation

Half-duplex back-pressure and IEEE 802.3x Full-

duplex flow control

Auto MDI/MDIX

Address Table Size

16K MAC Addresses

+ Power

Input

52-57VDC Redundant (Terminal block)

Power Consumption
10.4W Max (without PoE)

Power Power Budget
240W Max.

PoE Technology
Alternative A & B
Pins 1/2(+), 3/6(-), Pins 7/8(-), 4/5(+)

Power Power Output
Port 1 to 8 support PoE+ (15.4W/30W/60W)
IEEE 802.3af: up to 15.4W/port, 47-57VDC
IEEE 802.3at: up to 30W/port, 52-57VDC;
60W/port, 52-57VDC

Protection
Reverse Polarity Protection

+ Physical

Casing Material
Metal

IP Rating
IP30

Dimensions
71.4 x 140 x 170mm (W x D x H)
2.85" x 5.6" x 6.8"

Weight
1.7kg (3.74lbs)

Installation Type
DIN-rail mounting

+ Environmental

Operating Temp.
-40 to 75°C (-40 to 167°F)
Tested @ -40 to 85°C (-40 to 185°F)

Storage Temp.
-45 to 85°C (-49 to 185°F)

Relative Humidity
5% to 95% (non-condensing)

+ Regulatory

ISO
Manufactured in ISO-9001 facility

EMI
FCC Part 15B Class A
VCCI Class A
EN 61000-6-4

EMS
EN 61000-6-2
EN 61000-4-2 (ESD)
EN 61000-4-3 (Radiated RFI)
EN 61000-4-4 (Burst)
EN 61000-4-5 (Surge)
EN 61000-4-6 (Induced RFI)
EN 61000-4-8 (Magnetic Field)

Safety
UL 61010

Vibration
IEC 60068-2-6 Fc

Shock
IEC 60068-2-27 Ea

Free Fall
FED STD 101C Method 5007.1

Industrial Compliance
NEMA TS2

+ Warranty

Length
Limited Lifetime

Details
www.etherwan.com/support/warranty-policy

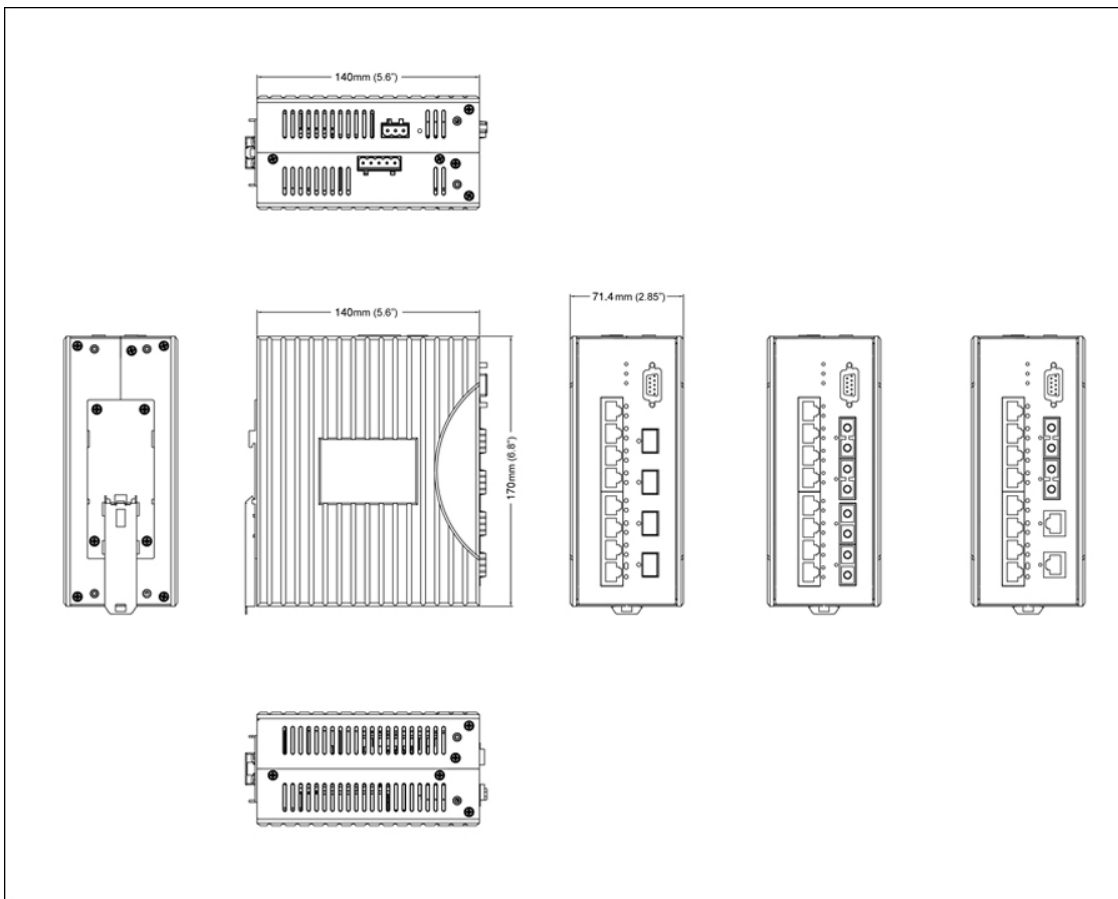
+ What's Included

Device
Ethernet Switch

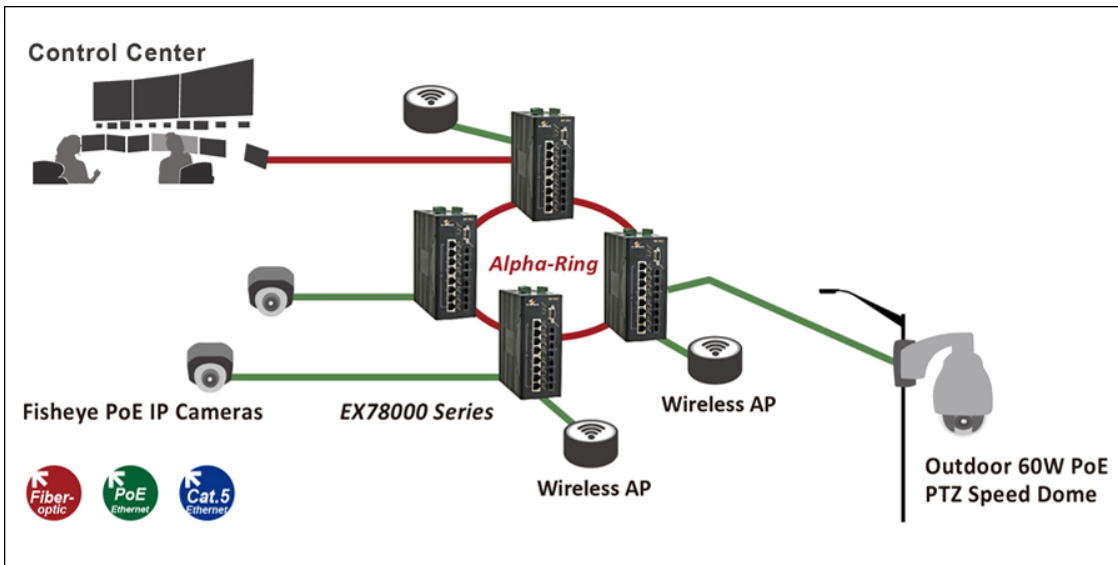
Cables
1 Console Cable

Documentation
Quick Install Guide

產品尺寸圖

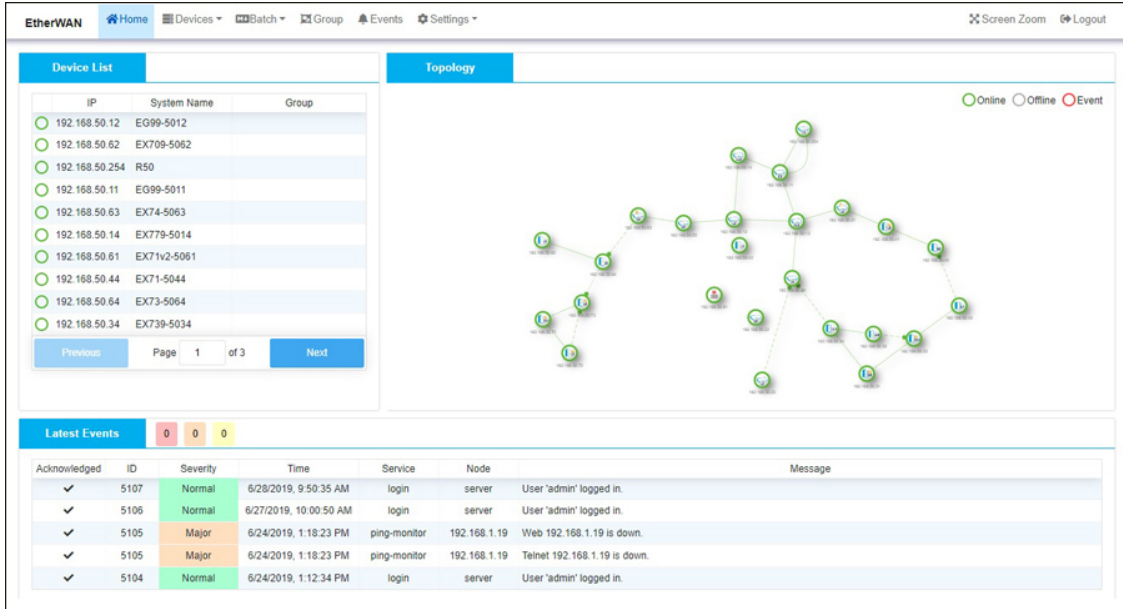


產品應用圖



管理軟體

Network Management [eVue™ Network Configuration and Monitoring Tool](#)
 Network Discovery [eLite™ Network Discovery and IP Configuration Tool](#)



The screenshot shows the EtherWAN management interface. It features a navigation bar at the top with options like Home, Devices, Batch, Group, Events, and Settings. The main content area is divided into two panels: 'Device List' and 'Topology'.

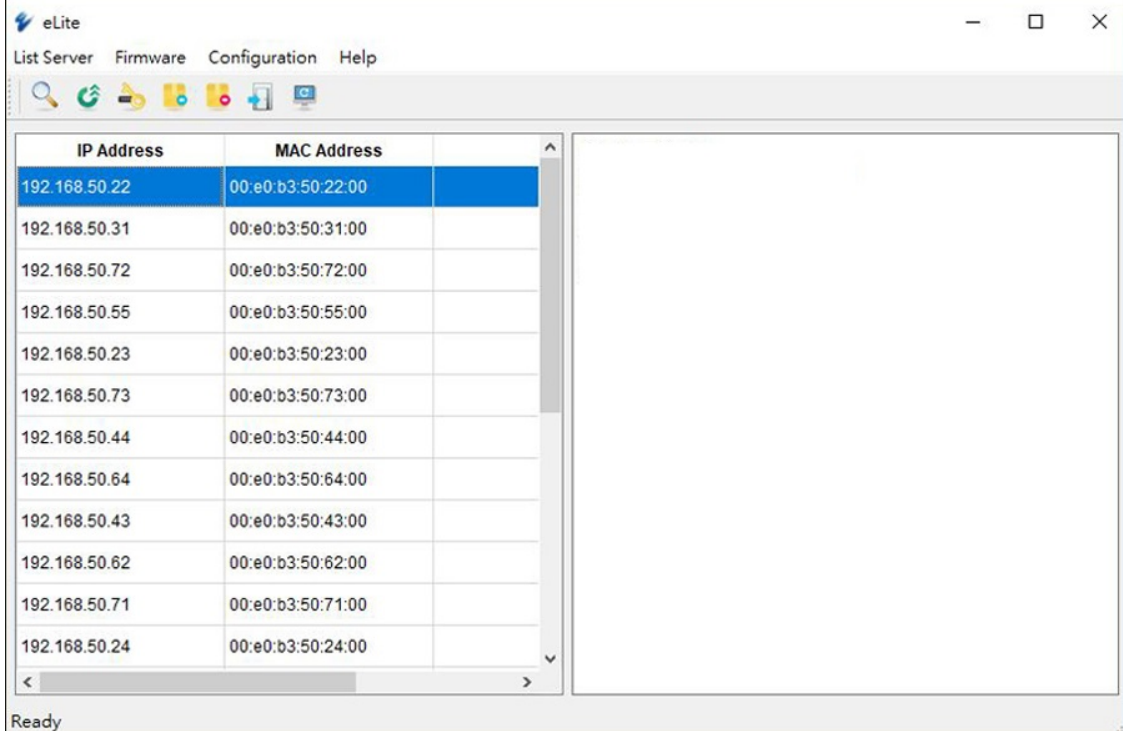
Device List:

IP	System Name	Group
192.168.50.12	EG99-5012	
192.168.50.62	EX709-5062	
192.168.50.254	R50	
192.168.50.11	EG99-5011	
192.168.50.63	EX74-5063	
192.168.50.14	EX779-5014	
192.168.50.61	EX71v2-5061	
192.168.50.44	EX71-5044	
192.168.50.64	EX73-5064	
192.168.50.34	EX739-5034	

Topology: A network diagram showing interconnected nodes, some of which are highlighted in green to indicate they are online. A legend indicates Online (green circle), Offline (grey circle), and Event (red circle).

Latest Events:

Acknowledged	ID	Severity	Time	Service	Node	Message
✓	5107	Normal	6/28/2019, 9:50:35 AM	login	server	User 'admin' logged in.
✓	5106	Normal	6/27/2019, 10:00:50 AM	login	server	User 'admin' logged in.
✓	5105	Major	6/24/2019, 1:18:23 PM	ping-monitor	192.168.1.19	Web 192.168.1.19 is down.
✓	5105	Major	6/24/2019, 1:18:23 PM	ping-monitor	192.168.1.19	Telnet 192.168.1.19 is down.
✓	5104	Normal	6/24/2019, 1:12:34 PM	login	server	User 'admin' logged in.



The screenshot shows the eLite network discovery tool interface. It has a menu bar with 'List Server', 'Firmware', 'Configuration', and 'Help'. Below the menu is a toolbar with various icons. The main area displays a table of discovered devices.

IP Address	MAC Address
192.168.50.22	00:e0:b3:50:22:00
192.168.50.31	00:e0:b3:50:31:00
192.168.50.72	00:e0:b3:50:72:00
192.168.50.55	00:e0:b3:50:55:00
192.168.50.23	00:e0:b3:50:23:00
192.168.50.73	00:e0:b3:50:73:00
192.168.50.44	00:e0:b3:50:44:00
192.168.50.64	00:e0:b3:50:64:00
192.168.50.43	00:e0:b3:50:43:00
192.168.50.62	00:e0:b3:50:62:00
192.168.50.71	00:e0:b3:50:71:00
192.168.50.24	00:e0:b3:50:24:00

The status bar at the bottom indicates 'Ready'.

訂購型號

+ Model

EX78402-0YBT	4-port 10/100BASE-TX PoE + 2-port Gigabit
EX78802-0YBT	8-port 10/100BASE-TX PoE + 2-port Gigabit
EX78822-XZBT	8-port 10/100BASE-TX PoE + 2-port 100BASE-FX +2-port Gigabit
EX78822-VVBT	8-port 10/100BASE-TX PoE + 2-port 100BASE-SFP +2-port 100/1000BASE-SFP

* DIN-Rail mounting kit included.

+ 100FX Fiber Options (X)

1	Multi Mode (SC) - 2Km
2	Multi Mode (ST) - 2Km
A	Single Mode (SC) - 20Km

* More 100FX Fiber options also available upon request.

+ Gigabit Port Options (Y)

1	10/100/1000BASE-TX
3	1000BASE-SX (SC) - 550m
4	1000BASE-SX (SC) - 2Km
5	1000BASE-SX (ST) - 550m
A	1000BASE-LX (SC) - 10Km
R	1000BASE-BX (SC) WDM-TX: 1310nm/RX: 1550nm-20Km
S	1000BASE-BX (SC) WDM-TX: 1550nm/RX: 1310nm-20Km
V	Support 2-port 100/1000BASE SFP (DDM)

* More Gigabit options also available upon request.

+ Gigabit Port Options (Z)

1	10/100/1000BASE-TX
3	1000BASE-SX (SC) - 550m
4	1000BASE-SX (SC) - 2Km
5	1000BASE-SX (ST) - 550m
A	1000BASE-LX (SC) - 10Km
R	1000BASE-BX (SC) WDM-TX: 1310nm/RX: 1550nm-20Km
S	1000BASE-BX (SC) WDM-TX: 1550nm/RX: 1310nm-20Km

* More Gigabit options also available upon request.

+ Accessories

Hardened Gigabit SFP Module	www.etherwan.com/products/sfp-fiber-transceiver
DIN-Rail Power Supplies	www.etherwan.com/products/din-rail-power-supply (*)
*Recommended Power Supply	NDR-480-48 480W 48VDC DIN-Rail Power Supply
EB-232	Configuration Backup and Restoration Tool

