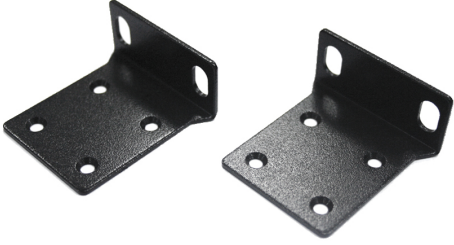


# Mounting Kits




# Ordering Info




## DIN-Rail Mounting Kits

Part Name	Product Photo	Description
KD-AA5100		DIN-Rail mounting kit For EL1032T and EX42900 Series
KD-AA78000		DIN-Rail mounting kit For EX73900, EX73900E, EX78000, EX78900 and EX78900E Series
KD-AA96000		DIN-Rail mounting kit For ED3538, ED3575, EL1141, EX33000, EX43000, EX63000, EX71000, EX73000, EX83000, EX94000 and EX95000 Series
KD-AAEL950		DIN-Rail mounting kit For ED3541, EL8000, EL8100 and EX41922 Series

## Panel Mounting Kits

Part Name	Product Photo	Description
KP-AA96-480		Panel mounting kit For EL900, EL1141, EX33000, EX43000, EX63000, EX71000, EX73000, EX73900, EX73900E, EX78000, EX78900, EX78900E, EX94000, EX95000 and SmartE Series
KP-S300		Panel mounting Kit For SmartE Series

## Rack Mounting Kits

Part Name	Product Photo	Description
KR-BKEL900		19" Rack mounting kit (black) For EL900, EL1141 and EX94000 Series
KR-BK-43-400		19" Rack mounting kit (black) For EX33000, EX43000 and EX95000 Series
KR-BK71000		19" Rack mounting kit (black) For EX71000 and EX61000A Series

KR-BK7800040		19" Rack mount kit (black) For EX73900, EX78000 and EX78900 Series
KR-AE612-400		19" Rack mounting kit (black) For EX27000 (Single Power), EX77000 (Single Power), EX87000 (Single Power) and EMC1200R Series
KR-BK1600R-410		19" Rack mounting kit (black) For EMC1600 Series



© EtherWAN Systems, Inc. All rights reserved. 20241001

EtherWAN is constantly developing and improving products. Specifications are subject to change without notice and without incurring any obligation.